

➤ **WEBINAR RULES:**

- *You'll be muted all along the Webinar.*
- *There's a Question section to ask your questions or send your comments whenever you want.*
- *The Webinar will be recorded. A link to the recording will be sent to you in few days.*

BOOSTING REQUIREMENTS MANAGEMENT CAPABILITIES IN MS WORD:

Propagating Changes from Traceability Links



JOSE PEREIRA
Junior Sales Representative
The REUSE Company
ilyes.yousfi@reusecompany.com



THE
REUSE
COMPANY



- ✦ **LIGHTNING ROUND OF TRC & THE PRESENTER**
- ✦ **THE INTEROPERABILITY HUB**
- ✦ **BINDINGS DEMO**
- ✦ **YOUR EXPERIENCE!**

THE REUSE COMPANY

Is a tool vendor specialized in the application of
SEMANTIC TECHNOLOGIES and
ARTIFICIAL INTELLIGENCE to improve the
digitalization of the Systems Engineering life cycle.



Introduction to Presenter >>



- **INCOSE ASEP**
- **MAIN CONTRIBUTOR TO THE INCOSE GUIDE TO WRITING REQUIREMENTS**
- **SALES & CONSULTING REPRESENTATIVE UNDER CSEP & ESEP**
- **FIRST AUTHOR OF THE *"APPLYING THE KNOWLEDGE CENTRIC SYSTEMS ENGINEERING METHODOLOGY TO A PRACTICAL CASE"***

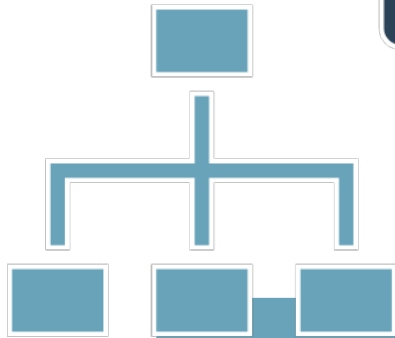


**THE
INTEROPERABILITY
HUB**



TEXTUAL REQUIREMENTS

Are the HEART of the current system engineering practices



CONCEPTUAL MODELS

Helps FORMALIZE and consolidate customer and system requirements

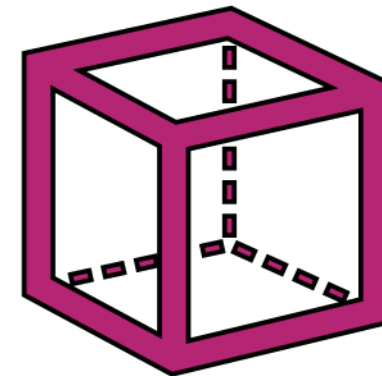
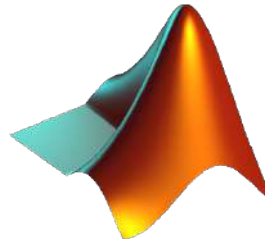
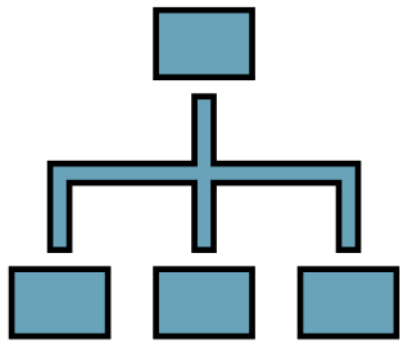


PHYSICAL MODELS

Helps validate FEASIBILITY, elicit/justify NEW REQUIREMENTS for the system/subsystems



fmi AUTHORITY SOURCES OF TRUTH



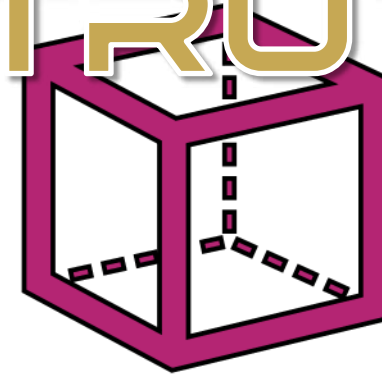
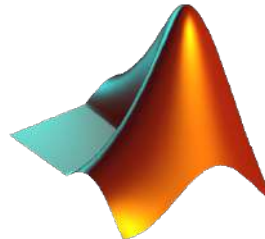
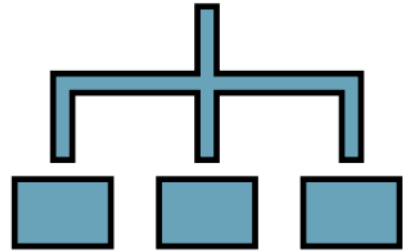
ALTUM DESIGNER



SYNCHRONIZED

SOLIDWORKS

SOURCE OF TRUTH M



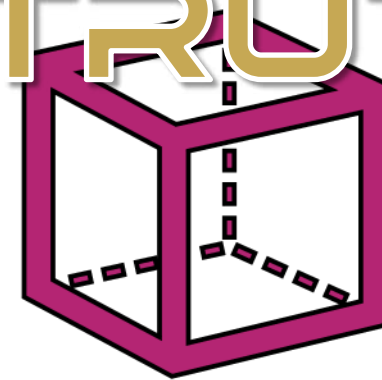
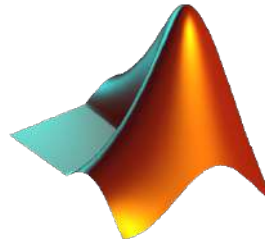
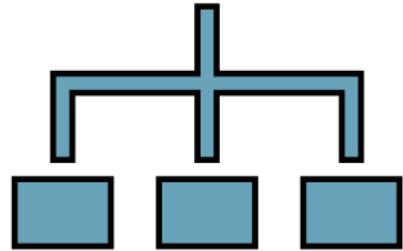
ALTIUM DESIGNER



SYNCHRONIZED

SOLIDWORKS

SOURCE OF TRUTH



TM



ALTUM DESIGNER

1

MOVING/COPYING WORKPRODUCTS

*No change of metamodel between source and target
Just moving among different tools*

2

TRANSFORMING WORKPRODUCTS

*Change of metamodel between source and target workproducts
Textual requirements to models, SysML to Capella ...*

3

BINDING WORKPRODUCTS

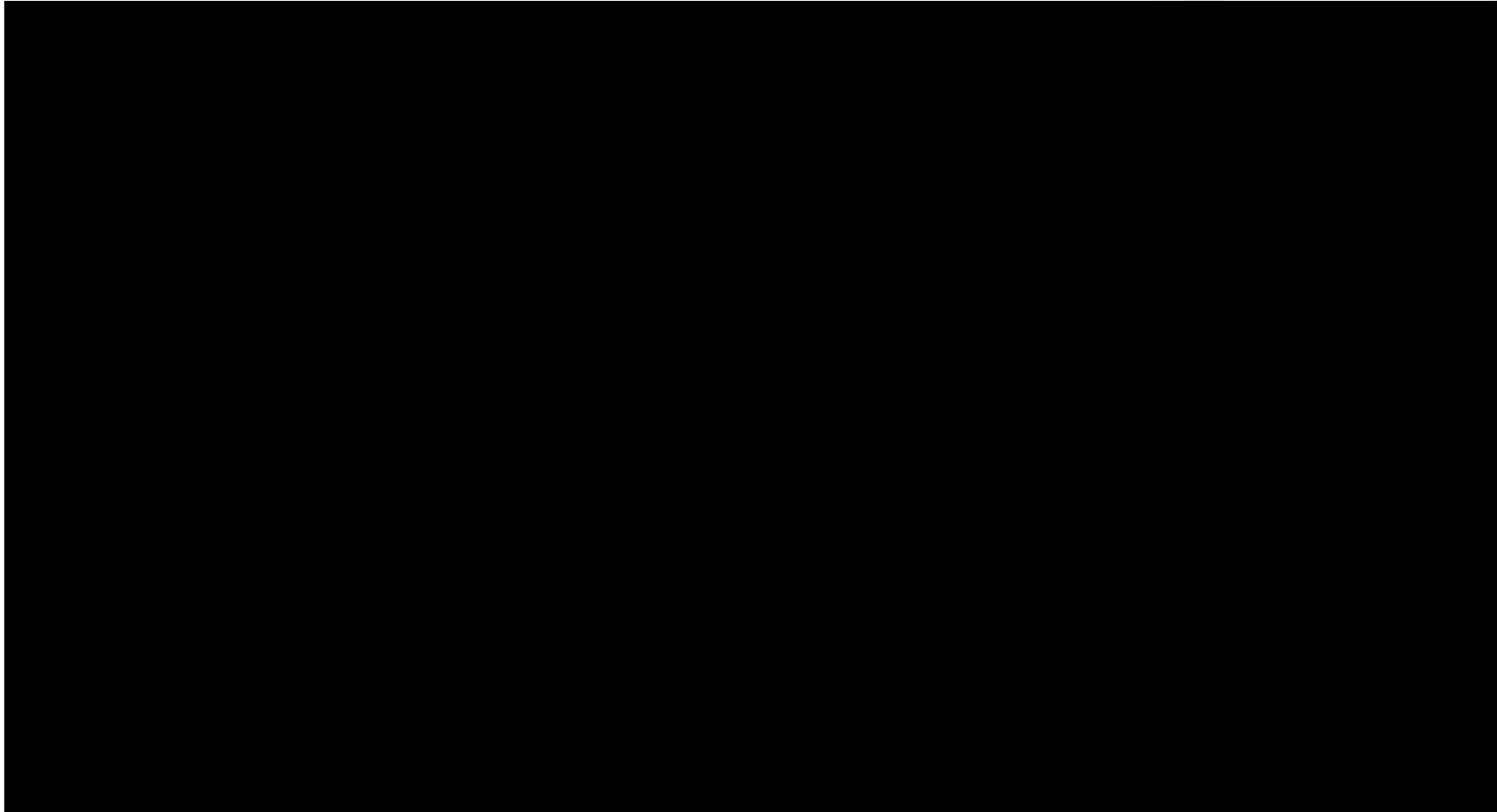
Changes in one workproduct triggering changes to target workproducts



BINDINGS



DEMO



DO YOU AGREE?

DID YOU FIND IT USEFUL?

OTHER ALTERNATIVES?

YOUR EXPERIENCE?



Don't miss our series of webinars!

Boosting MS Word with Requirements Management Capabilities

1. Introduction to the MS Word Add-in of SES ENGINEERING Studio
2. Writing high-quality requirements in MS Word
3. Parsing existing MS Word documents using different techniques
4. Managing requirement attributes in MS Word
5. Managing requirement baselines and versions in MS Word
6. Managing traceability in MS Word
7. Transforming MS Word requirements
8. Propagating changes from traceability links
9. Collaboration
10. Reporting Systems Engineering artifacts through MS Word

Sign up and recordings

15 '
webinar

EPISODE 9. COLLABORATION

This episode will cover **how permissions** can be established by defining **roles**, and how they can **control the access** assigned to different connections as well as the work items, without losing the ability to share these with colleagues in a **collaborative environment**.

DATES

Monday, June 5, 2023, 5:00 PM CET (Madrid)/ 8:00 AM PST (Los Angeles)/11:00 AM EST (Detroit)

Tuesday, June 6, 2023, 9:00 AM CET (Madrid)/ 4:00 PM JST (Tokyo)/ 5:00 PM AEDT (Sydney)

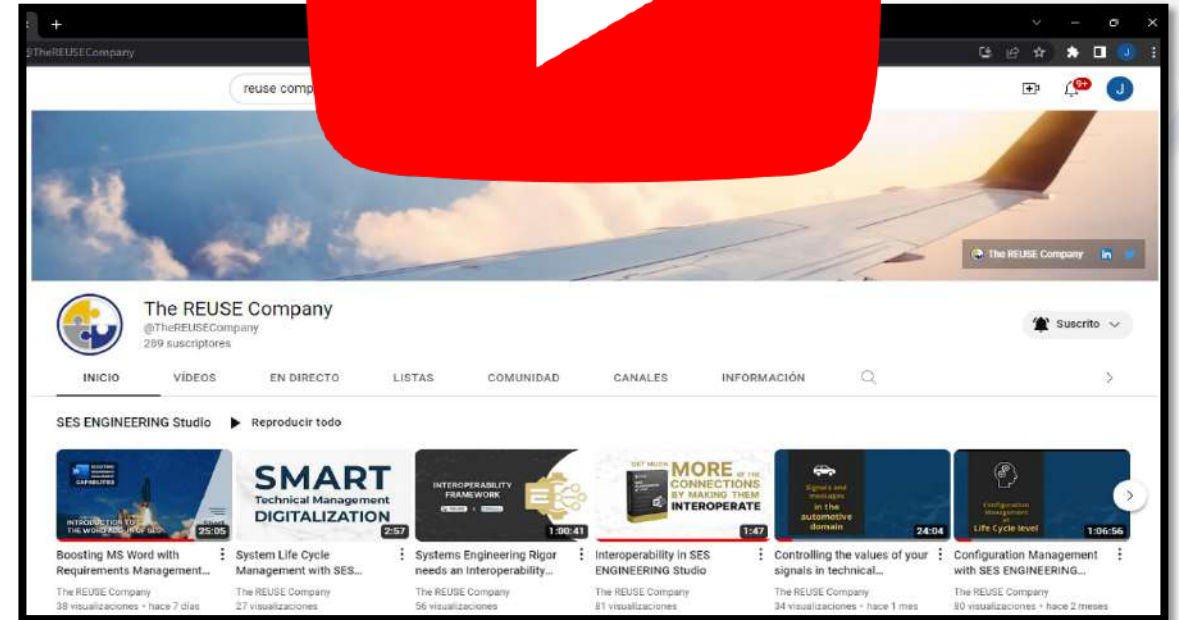
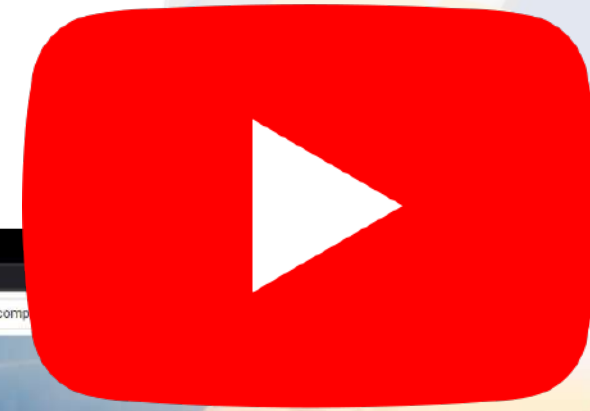


Software Tools for Digital Systems Life Cycle Management

Inter-connecting the complete Tools Ecosystem of your organization
Enabling digital support to all the Technical Management processes (ISO 15288) for the engineering items of your tools ecosystem
Integrating document centric (Documentation), knowledge driven (Reuse) and model-based (MBSE) approaches in one Hub

Systems Engineering Tools and Solutions for System Life cycle Management based on Connectivity, Interoperability and Reuse

WWW.REUSECOMPANY.COM



The REUSE Company

289 suscriptores

INICIO VIDEOS EN DIRECTO LISTAS COMUNIDAD CANALES INFORMACIÓN

SES ENGINEERING Studio ▶ Reproducir todo

- Boosting MS Word with Requirements Management... 25:05
- System Life Cycle Management with SES... 2:57
- Systems Engineering Rigor needs an Interoperability... 1:00:41
- Interoperability in SES ENGINEERING STUDIO 1:47
- Controlling the values of your signals in technical... 24:04
- Configuration Management with SES ENGINEERING... 1:06:56

[@THEREUSECOMPANY](https://www.youtube.com/@thereusecompany)



THE
REUSE
COMPANY

