



A SMARTER WAY TO DIGITALIZE YOUR SYSTEMS ENGINEERING



MAIN FEATURES

Universal Connectivity to your tools Ecosystem (RMS, MBSE, PLM, Office, CAD, Simulation, etc.)

Complete MBSE integration

Technical Management Digitalization for all the information managed by the tools in your ecosystem.

Quality analysis, V&V, Universal Traceability, Configuration Management, Decision Management, Knowledge Management, etc.

Semantic Interoperability Hub and Synchronized Source of Truth

Complete Project Workflow Management based on the tools integration

MBRE: Full integration of Requirements and Natural Language texts in the MBSE approach by using Semantic Analysis and AI.



ENG



RQA



V&V



RAT



TRA



KM

TEST YOURSELF

If you answer YES to at least one of the following questions, we have the solution for you:

Do you have to deal with a large and heterogeneous ecosystem of Systems Engineering SW Tools for developing your products?

Would you like to smoothly reuse and evolve the skills and experience of your engineers avoiding huge investments for learning new tools?

Would you like to manage the development of your product/project by connecting in a workflow the existing SE tools you already have?

Would you like to provide Technical Management Support (quality, CM, Traceability, V&V, etc.) to any output (requirements, logical models, manuals, test cases, etc.) from your current ecosystem of SE Tools?

Would you like your ecosystem of SE tools to be transformed into a Smart Systems Engineering framework?



A SMARTER WAY TO DIGITALIZE YOUR SYSTEMS ENGINEERING

TEST YOURSELF

Do you have to deal with a large and heterogeneous ecosystem of Systems Engineering software tools for developing your products?

TAMING YOUR ECOSYSTEM OF HETEROGENEOUS SE TOOLS

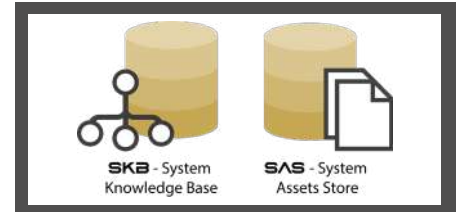
SES ENGINEERING Studio is a software tool designed to orchestrate the development of all kinds of systems (hardware, hybrid, software). It allows **interoperability between an unlimited number of existing Systems Engineering tools** (Requirements Management Systems, MBSE tools, Simulation tools, Risks Management, RAMS Management, MS Office, etc.).

For example, you can edit your requirements from **IBM DOORS**, connect them with **Atlassian Jira**, change your models in **Dassault Systèmes CAMEO** based on simulations in **Modelica**, generate models in **Capella** from requirements in **Siemens Teamcenter** or convert **Microsoft Word** into a **professional Requirements Engineering tool**.

CENTRAL REPOSITORY FOR MANAGING CONFIGURATIONS, VERSIONS, TRACES, QUALITY, ETC

Even if the selected SE tools at your side take care of their own information (IBM DOORS, DS Cameo, Thales Capella, etc..) it is usually necessary to **integrate them all, control changes or define versions** for the different work products (requirements, model elements, diagrams, circuits, etc.), **trace among them, define configurations, manage their risks, evaluate their quality**, etc.

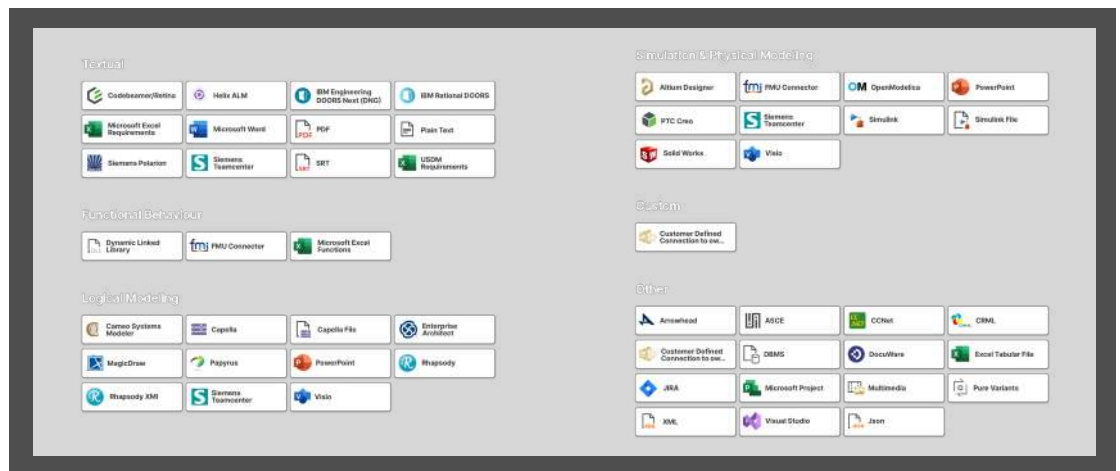
SES ENGINEERING Studio takes care of all these needs managing this information in its central repository.



INTEROPERABILITY WITHIN THE ECOSYSTEM OF SE TOOLS

Usually, every SE tool is proficient in managing the information it has been designed to work with. For example, a Requirements Management System (RMS) is best suited to manage requirements. But, when you want to transform or operate with the work products of a SE tool to produce, affect or connect with the work products of another tool, real interoperability problems arise. **SES ENGINEERING Studio** offers you a framework for defining your **interoperability transformations & operations**, tailored to your own needs.

Do you want to generate test cases from requirements? Would you like to connect models with functions in Microsoft Excel for simulation purposes? Would you like to automatically discover traces between the customer documents and the user manuals of your products? All those challenges and many more can be defined and configured in **SES ENGINEERING Studio**.



Would you like to smoothly reuse and evolve the skills and experience of your engineers avoiding huge investments for learning new tools?

REUSING SKILLS AND CAPABILITIES

By enabling the organization and structuring of the SE tools ecosystem within an organization into a Project Workflow Manager, you will be able to **reuse knowledge skills and company investments**.

By integrating the SE tools into modern & consolidated product development capabilities, your company will make more efficient use of the tools.

EVOLVING SE TOOLS AND SKILLS WHEN NECESSARY AND SMOOTHLY

You can seamlessly plan the replacement of a SE tool with a more modern or adaptable one without losing the information produced and allowing maturity to grow with minimum investments.

Would you like to manage the development of your product/project by connecting in a workflow the SE tools you already have?

CREATING LIFECYCLE TEMPLATES

According to the ISO 15288 Standard, a specific **Life cycle Management** process must be considered when developing a **project**. **SES ENGINEERING Studio** has been designed to enable the creation and instantiation of Project workflows and templates. Using them allows the organization of knowledge regarding the different stages and dependencies all engineers must follow to assure a successful product development.

A template is defined by connecting to SE tools, establishing dependencies between them, creating folders to organize them and configuring **decision gates** to manage the flow between them.

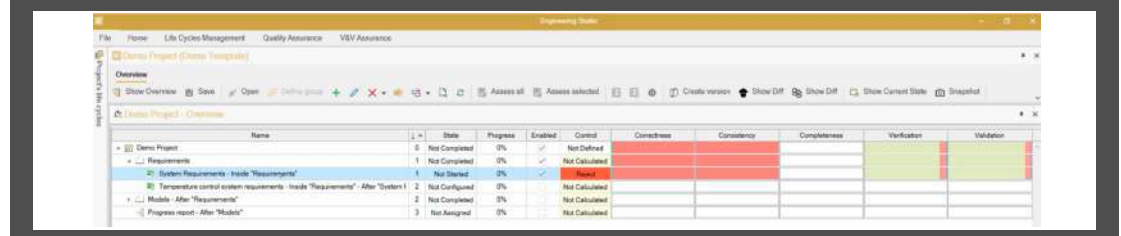


A SMARTER WAY TO DIGITALIZE YOUR SYSTEMS ENGINEERING

MANAGING PROJECTS USING A WORKFLOW OF SE TOOLS OUTPUTS

By instantiating templates, the corresponding engineering team can define the actual project structure to be followed reusing previous experiences. It is a wonderful example of **knowledge reuse**.

Once inside a project, the project manager can follow the evolution of the situation by controlling progress, using quality, V&V, traceability, and time, effort & resources.

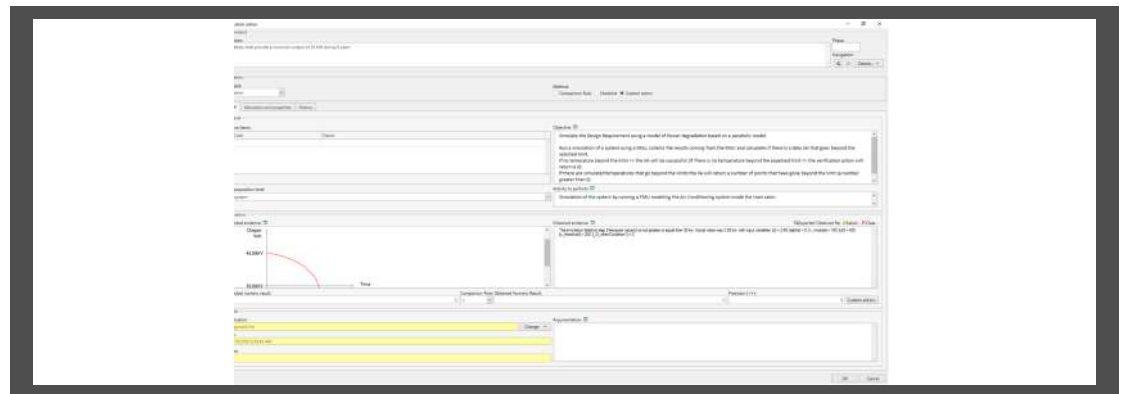


Would you like to manage the development of your product/project by connecting in a workflow the SE tools you already have?

On the other hand, project engineers can follow the availability guidance provided by the predefined workflow (for example, you can work on **System Requirements** and **Functional Architecture** in parallel but not define the detailed design of the engine until having successfully passed a decision gate). These engineers can work on the actual engineering items (requirements, models, etc.) and provide the means to calculate the quality, versions, etc.

AUTOMATING AND DIGITALIZING DECISION GATES EVIDENCE

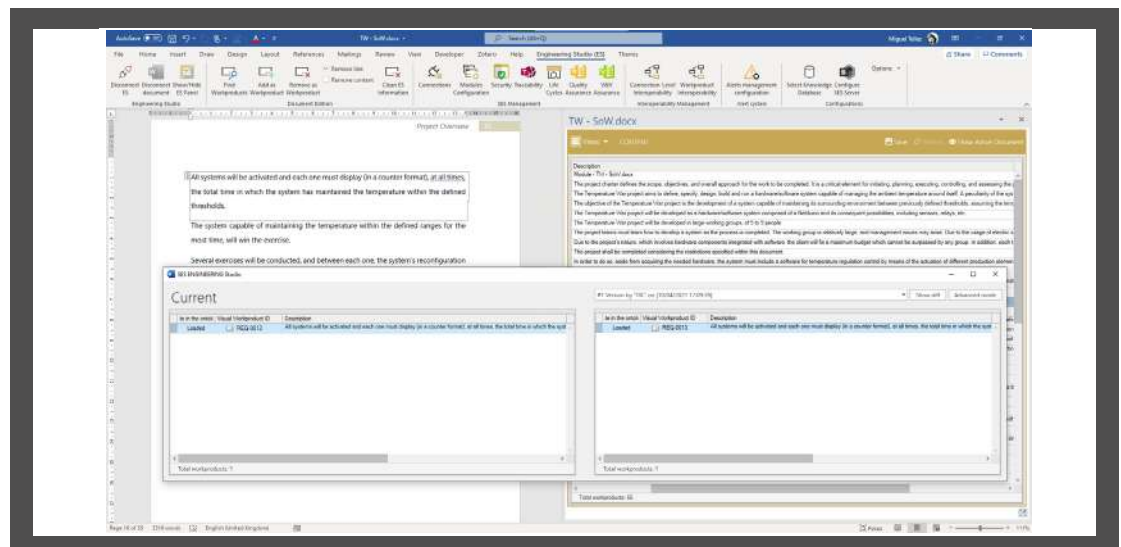
Every decision gate can be assigned a **verification action**, where the engineers can digitally manage the necessary evidence verification to make a decision (for example the answers within a checklist). The verification action can be configured to perform an automatic calculation of the evidence, as well as suggest an automatic proposal for a result (the engineer will always have the last word to accept or not the provided evidence).



INTEGRATING QUALITY, V&V, TRACEABILITY, AUTHORIZING, CM AND RISK MANAGEMENT

SES ENGINEERING Studio has been designed to include all the existing Technical Management SE tools already commercialized by The REUSE Company. Therefore, the former **RQA – QUALITY Studio**, **V&V Studio**, **RAT – AUTHORIZING Tool**, and **TRACEABILITY Studio**, together with the **Configuration Management**, **Risk Management**, **Decision Management**, **Information Management**, and **Knowledge Management**, form now the **CORE** of **SES ENGINEERING Studio** functionalities.

Would you like to provide Technical Management Support (quality, CM, Traceability, V&V, etc.) to any output (requirements, logical models, physical models, manuals, test cases, etc.) from your current ecosystem of SE tools?



SES ENGINEERING STUDIO



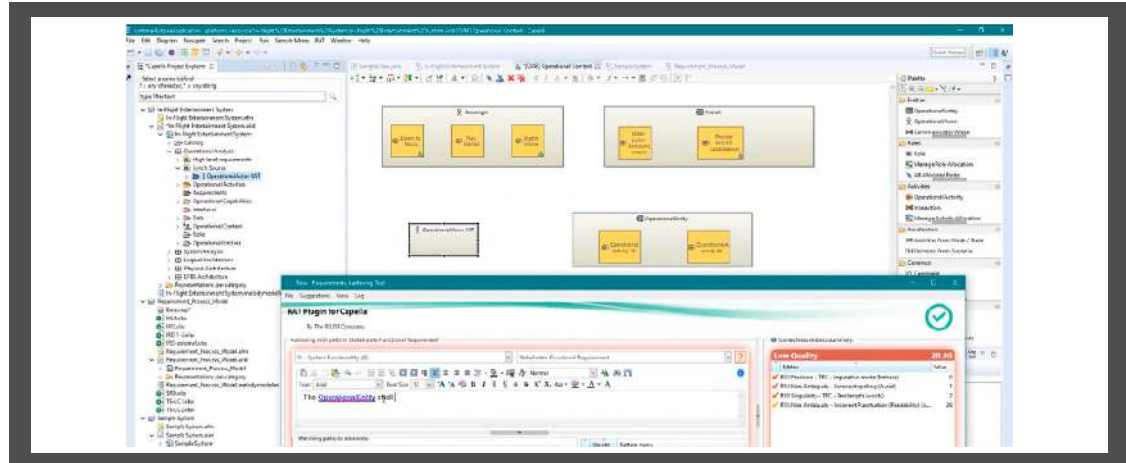
A SMARTER WAY TO DIGITALIZE YOUR SYSTEMS ENGINEERING

TRANSFORMING YOUR SYSTEMS ENGINEERING ECOSYSTEM INTO A PROFESSIONAL PROJECT WORKFLOW MANAGEMENT FRAMEWORK

By offering **full connectivity** (managing source content from **SES ENGINEERING Studio**, minimizing the impact of a particular SE tool in the system life cycle, allowing **interoperability between tools**, providing a **system development workflow** on top of different tools), your SE tools ecosystem will be **integrated** and transformed into a professional **System development Management environment**.

In some cases (desktop & online applications) **SES ENGINEERING Studio** can be included inside a particular SE tool (Microsoft Office, Capella, CAMEO Systems Modeller, etc. and provide all SE capabilities from inside.

Would you like your ecosystem of SE tools to be transformed into a Smart Systems Engineering framework?

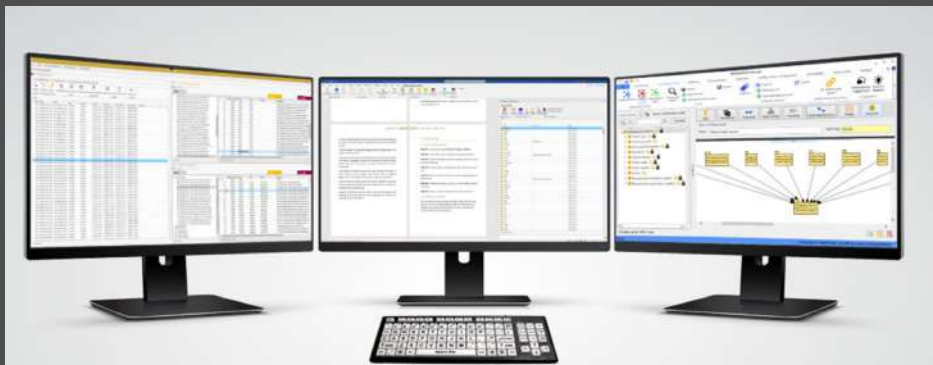


ARTIFICIAL INTELLIGENCE AND ONTOLOGIES

SES ENGINEERING Studio relies on the experience of The REUSE Company working with **Artificial Intelligence and Ontologies**. By using machine learning strength, the engineers receive **support to take decisions**, to **author requirements smartly**, to assess quality **automatically**, to **generate trace suggestions** or even **V&V proposals**.

POWERFUL ENGINEERING ENVIRONMENT

Complex and complicated projects need proper environments to work in. An engineer has so many processes to take care of at the same time, with so many dependencies, so many trace links, so many decisions, and so little help. **SES ENGINEERING Studio** allows engineers to organize their digital environments as they wish. Do you have 2 monitors? 3 monitors? even more? Great. **SES ENGINEERING Studio** will be able to fill them with different windows containing any information you want to work with within one single sight. Any changes will be automatically propagated in real time to the other windows accordingly.



The REUSE Company
contact@reusecompany.com
www.reusecompany.com
@ReuseCompany

North & East Europe
Spanska Ambassadens
Handelsavdelning
Drottninggatan 82
111 36 Stockholm – Sweden
+46 (0) 72 232 24 63

West Europe, the Americas &
Japan
Margarita Salas, 16
Parque Tecnológico LEGATEC
28919- Leganés. Madrid (Spain)
+34 912 17 25 96

