

➤ Webinar rules:

- You'll be muted all along the Webinar
- There's a *Question* section to ask your questions or send your comments whenever you want
- The Webinar will be recorded. A link to the recording will be sent to you in few days

Boosting Requirements Management capabilities in MS Word:

Collaboration – Change Management (9/10)



Ilyes Yousfi

Senior Key Account Manager

The REUSE Company

ilyes.yousfi@reusecompany.com



THE
REUSE
COMPANY



- Short introduction to The REUSE Company and the presenter
- Why manage collaboration?
- The need for configuration management for an effective collaboration
- Use Case #1: Configure permissions to enable a change management workflow
 - Live demo
- Use Case #2: Manage changes in- and outside SES to get the whole picture
 - Live demo
- Q&A



01

What we DO



The REUSE Company is a tool vendor specialized in the application of semantic technologies and artificial intelligence to improve the digitalization of the Systems Engineering life cycle.





Ilyes Yousfi

- **Current position:** Senior Key Account Manager at The REUSE Company
- Master's degree from the University of Montreal (Canada) and the IMT Atlantique School of Engineering (France).
- **INCOSE Member** (AEIS – Spanish Chapter)
 - Active member of the **Requirements Working Group**
 - Associate Systems Engineering Professional (ASEP) **Certification.**
- 7 years of experience, technical background in energy and mechanical engineering
- Speak 4 languages fluently: English, French, German and Spanish.



Collaboration & Change Management

COLLABORATION

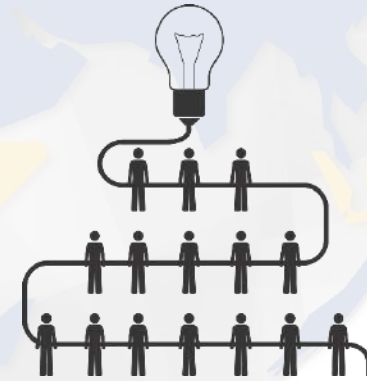
= Working **together** to achieve a **common** goal

Together...

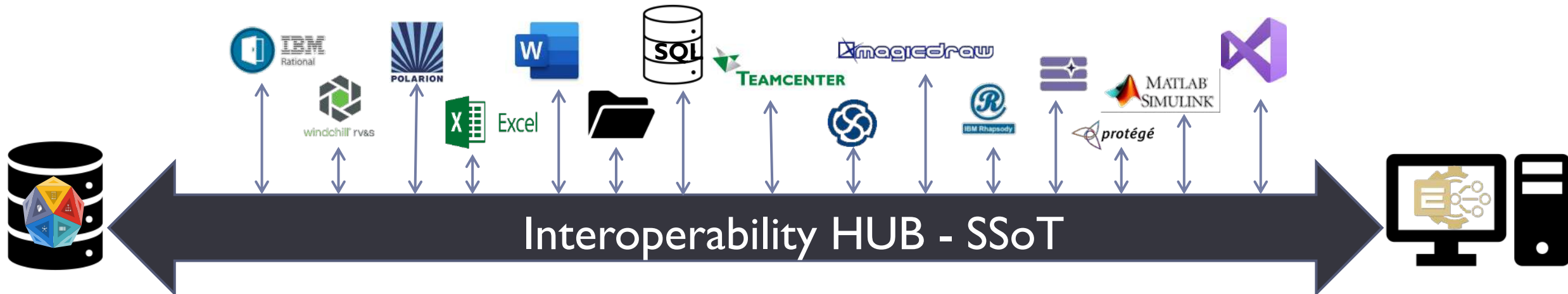
- Avoiding siloed entities and enhancing **cross-domain** teams
- Enabling common platforms for **multidisciplinary** contributions and **sharing** knowledge

Common...

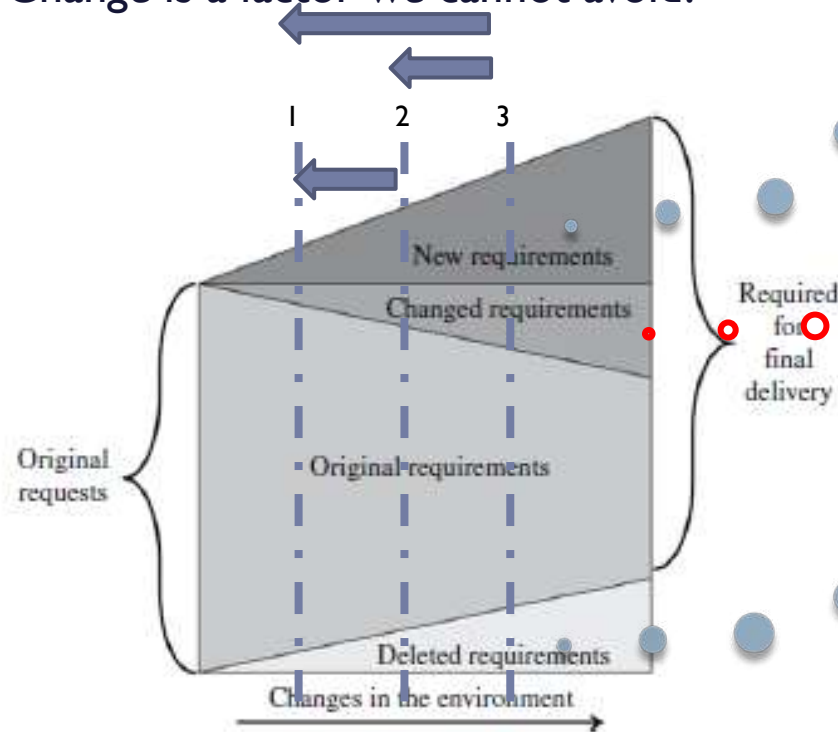
- Meeting the **organization's** business objectives, **stakeholder** needs and the overall **project's** schedule.



- > A good collaboration workflow must rely on the following:
 - > **Common understanding** of the concepts (common glossary / vocabulary / model representation / ontology)
 - > **Configuration management**
 - > Where/Who the changes come from?
 - > Impact analysis (How does it affect other documents?)
 - > Change control: suggest changes only vs. approve/reject suggested changes
 - > Ability to synchronize different natures of engineering tools (**Homogeneity**).



- Key process to mitigate the risks of change, which are **multiplicated** in collaborative environments!
- Change is a factor we cannot avoid!



Are these new requirements necessary?

Am I introducing conflicts?

May this new version underspecify the system?



More info...

Configuration Management in SES ENGINEERING Studio:
 "From a tool-centric to a life cycle-wide approach"

 Ilyes Youssi
 Senior Key Account Manager
 The REUSE Company
 ilyes.youssi@reuscompany.com

 Cecilia Karlsson
 Marketing & Communication
 The REUSE Company
 cecilia.karlsson@reuscompany.com





- Roles & User Management (Episode 10 of the series)
 - Define user roles & permissions

- Change Management workflow (Demo)
 - Capture change requests and monitor the changes
 - Define roles that will be responsible for Change Control and for Change suggestions (contributors).
 - Filter attempts of changes outside of the workflow

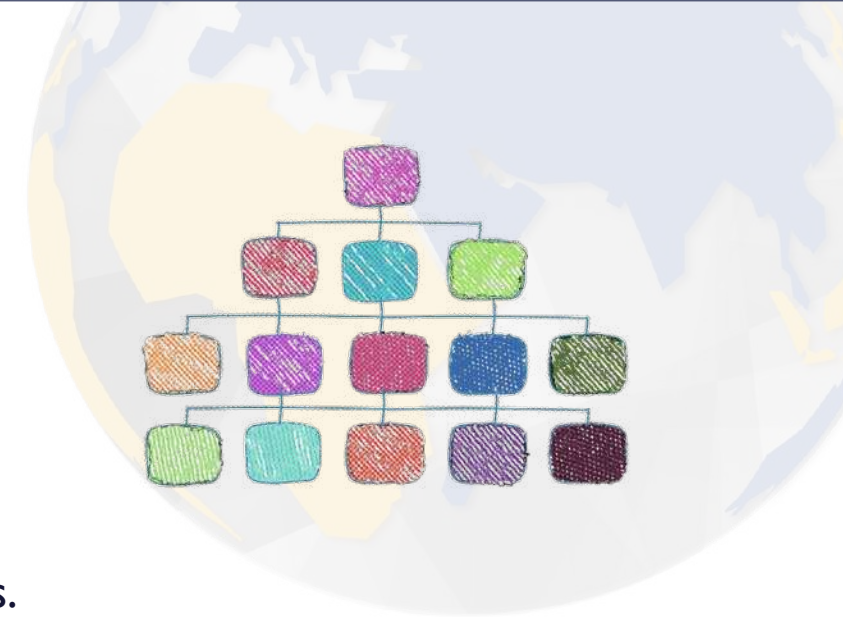




1. Managing roles

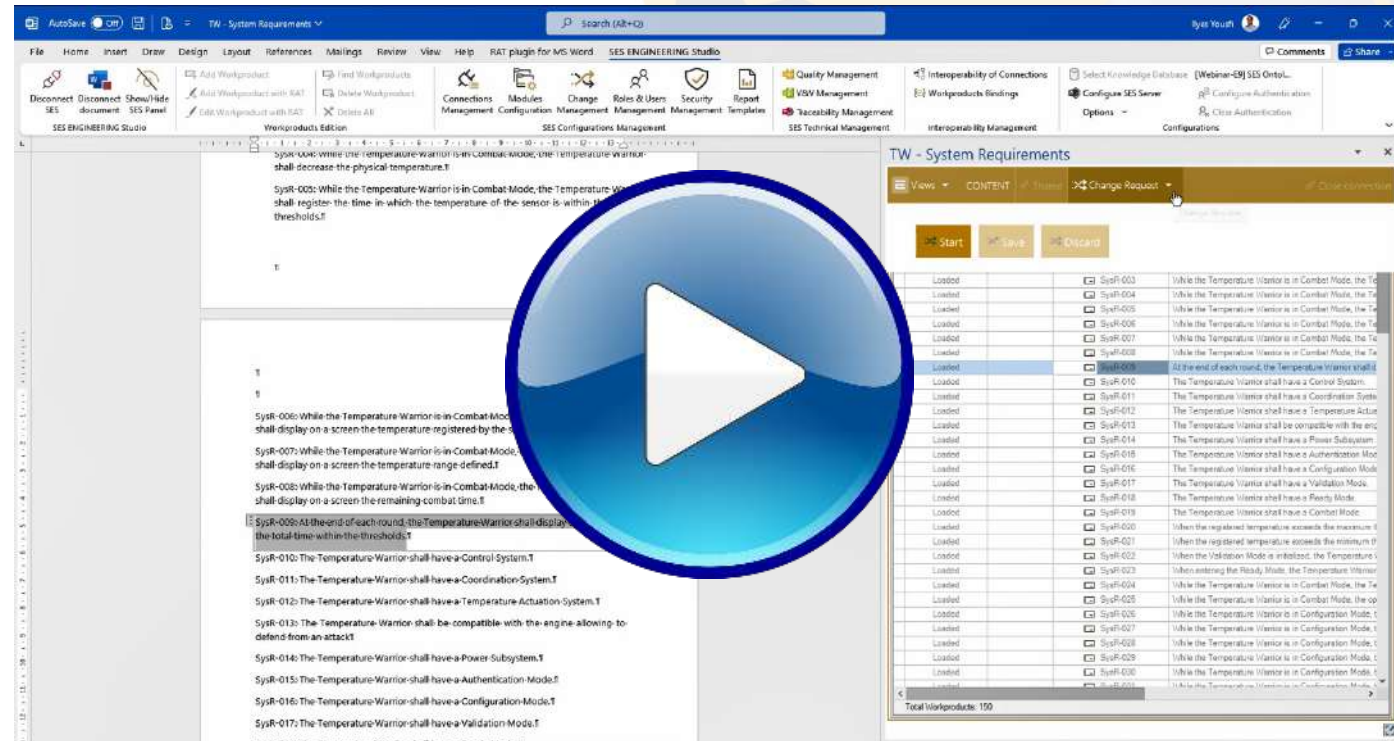


- Define role for Change Control Board
 - Project Leader – Administrator Access
 - Can enable/disable Change control Mode
- Define role for Contributor
 - Read-only access
 - Change Request mode to edit the document and submit change requests.



Steps:

1. Open the SES ENGINEERING Studio MS-Word Add-in
2. Connect with a **RE** user (syseng1)
3. Try to edit a requirement and notice objects are **locked**
4. Enter **Change Request** mode.
5. Try again editing on **SES add-in side (engineering view)** the document, it works!

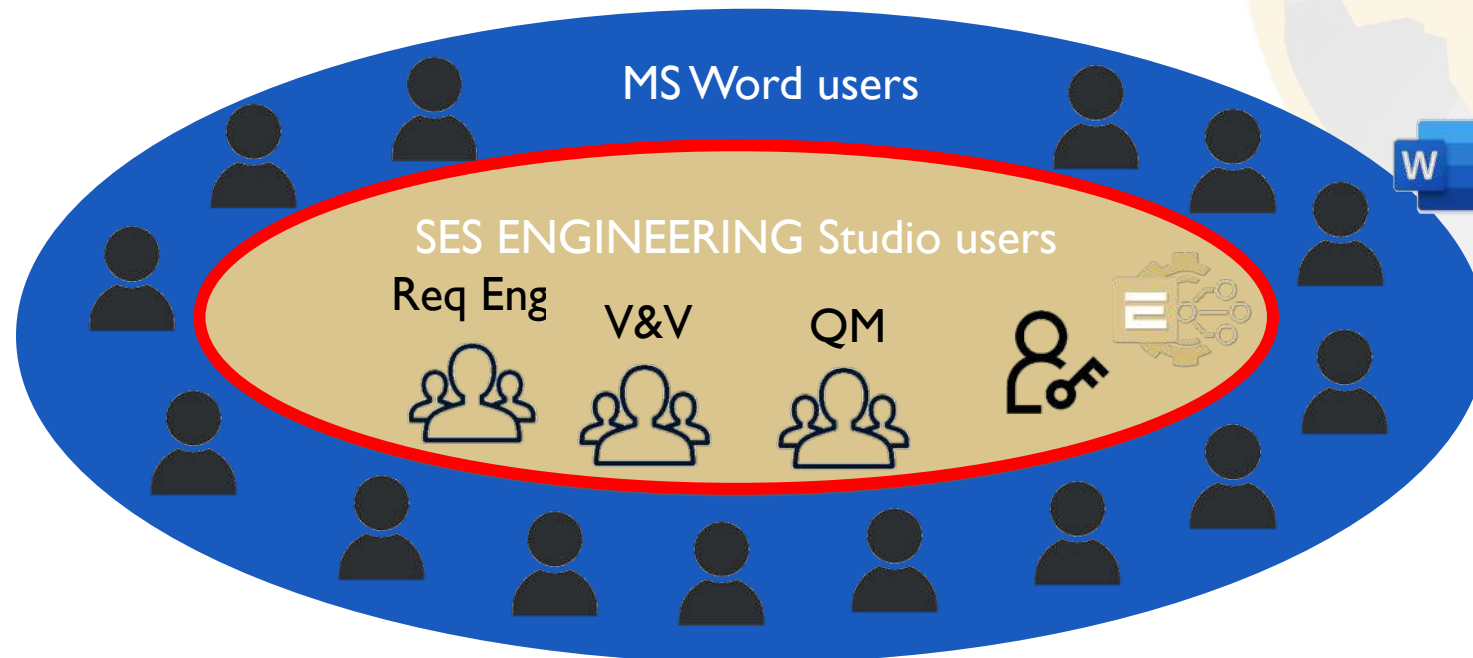




2. Manage changes Inside and outside SES

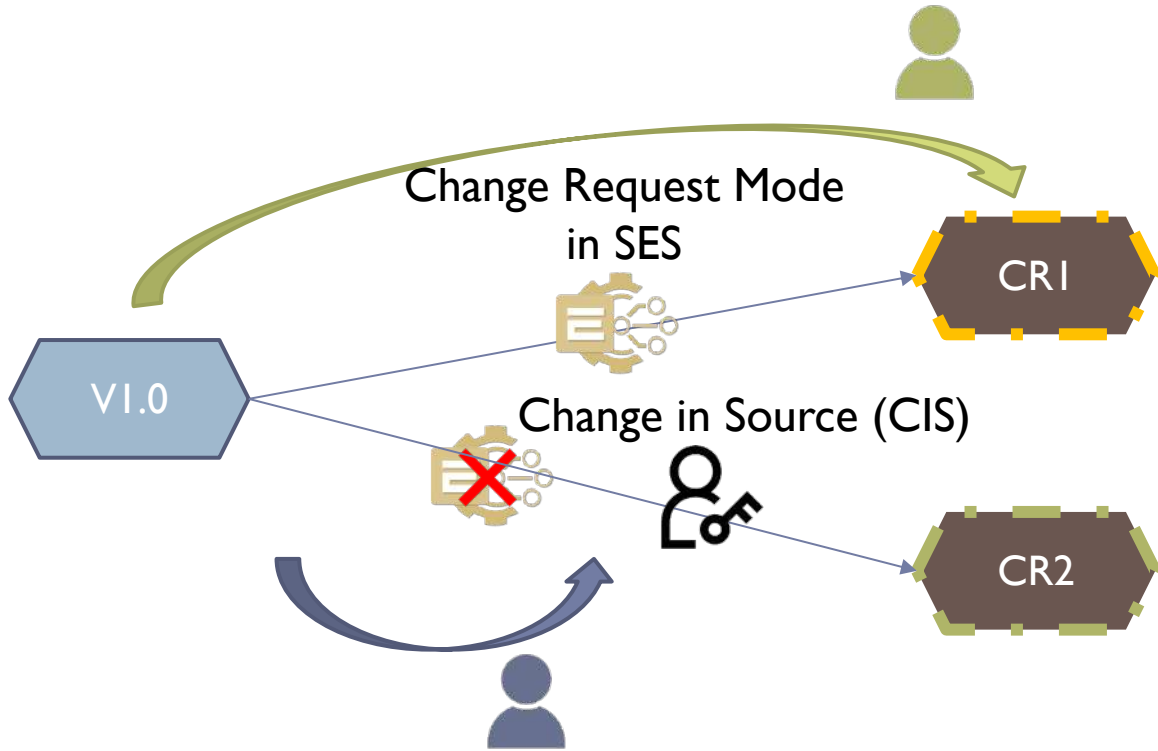
> User Management in SES ENGINEERING Studio Add-in for MS Word...

???



SES ENGINEERING Studio Change Management

> The workflow to manage simultaneous changes in- and outside



Change Request resolution order: Based on Creation Date!

Module Change Requests

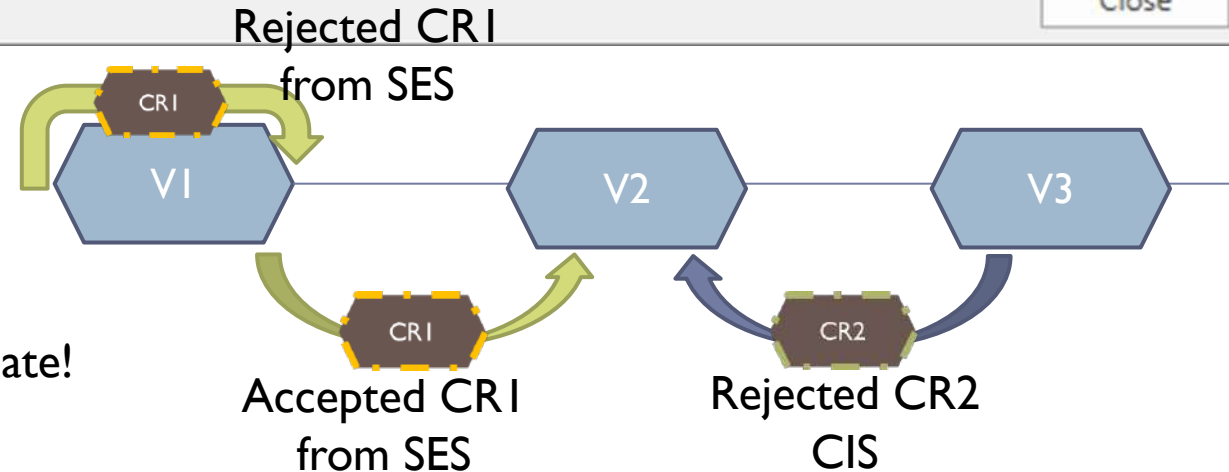
Change requests for Module Module - TW - System Requirements.docx

Drag a column header here to group by that column

	Title	Rationale	CIS	Creation Date	User	Resolution
	CR1	CR1	<input type="checkbox"/>	5/30/2023 11:20:36 AM	Joe Manager	Solved
	CR2	CR2	<input checked="" type="checkbox"/>	5/30/2023 11:21:24 AM	Joe Manager	Pending

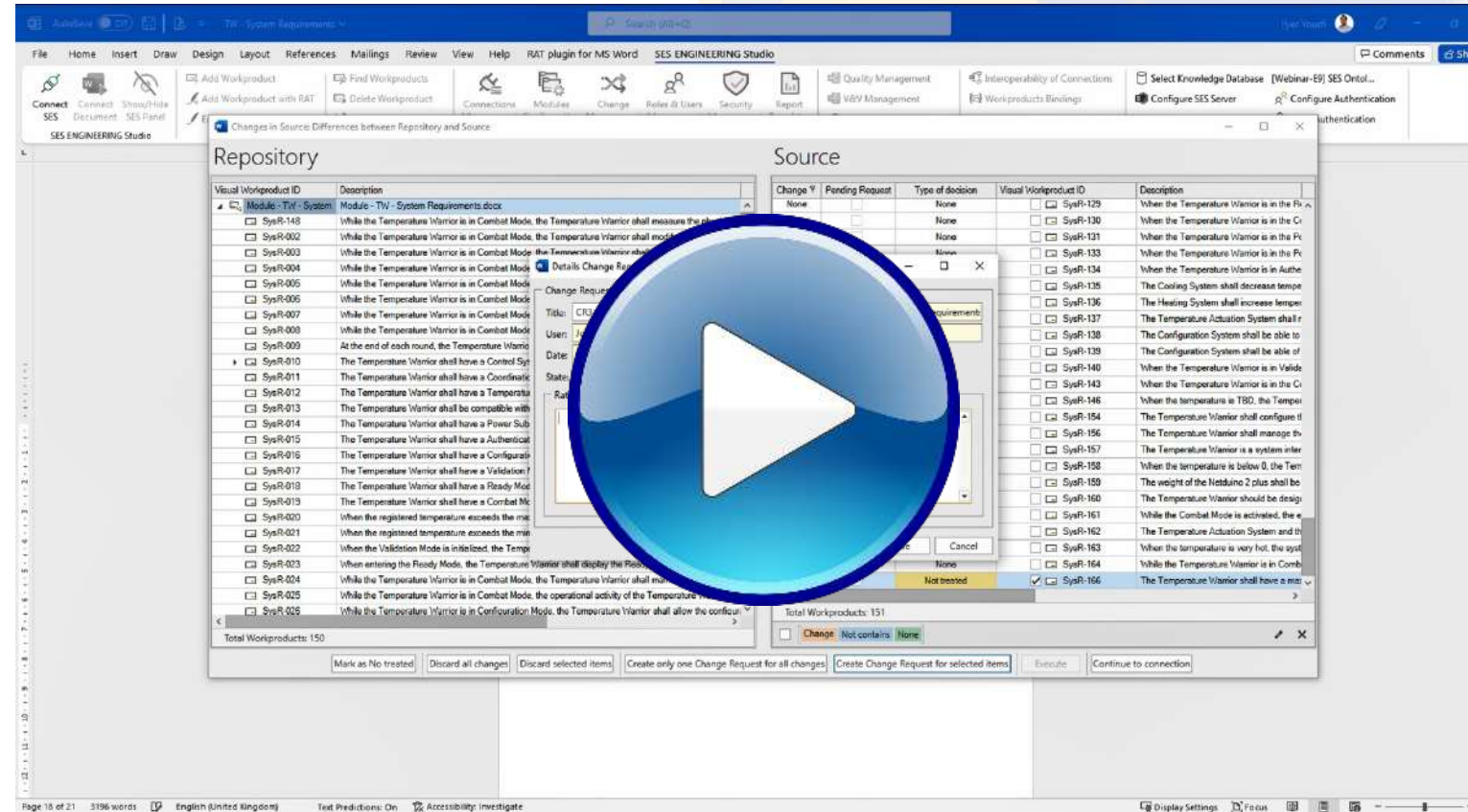
Change Requests must be managed in order by their creation date.

Close



Demo steps:

1. Connection is under **Change Request Mode**
2. Start working under Change Request
3. Suggest creating **new requirement**
4. **Save Change Request**
5. Another user works **outside SES** and suggests also a new object (**same ID!!!**)...
6. **Admin** connects to resolve change requests





Don't miss our series of webinars!

Boosting MS Word with Requirements Management Capabilities

1. Introduction to the MS Word Add-in of SES ENGINEERING Studio
2. Writing high-quality requirements in MS Word
3. Parsing existing MS Word documents using different techniques
4. Managing requirement attributes in MS Word
5. Managing requirement baselines and versions in MS Word
6. Managing traceability in MS Word
7. Transforming MS Word requirements
8. Propagating changes from traceability links
9. Collaboration
10. Reporting Systems Engineering artifacts through MS Word

15 '
webinar

Sign up and recordings

Episode 10. Shared access and permissions in collaborative environments

This episode will cover how **roles & user permissions** can be established within an MS Word document to control **the access level to the work items**, as well as the operations to perform with the SES ENGINEERING Studio add-in, without losing the ability to **share the work with colleagues** in a collaborative environment.

Dates:

Tuesday, June 20th, 2023, 5:00 PM CET (Madrid)/ 8:00 AM PST (Los Angeles)/ 11:00 AM EST (Detroit)

Thursday, June 22nd, 2023, 9:00 AM CET (Madrid)/ 4:00 PM JST (Tokyo)/ 5:00 PM AEDT (Sydney)



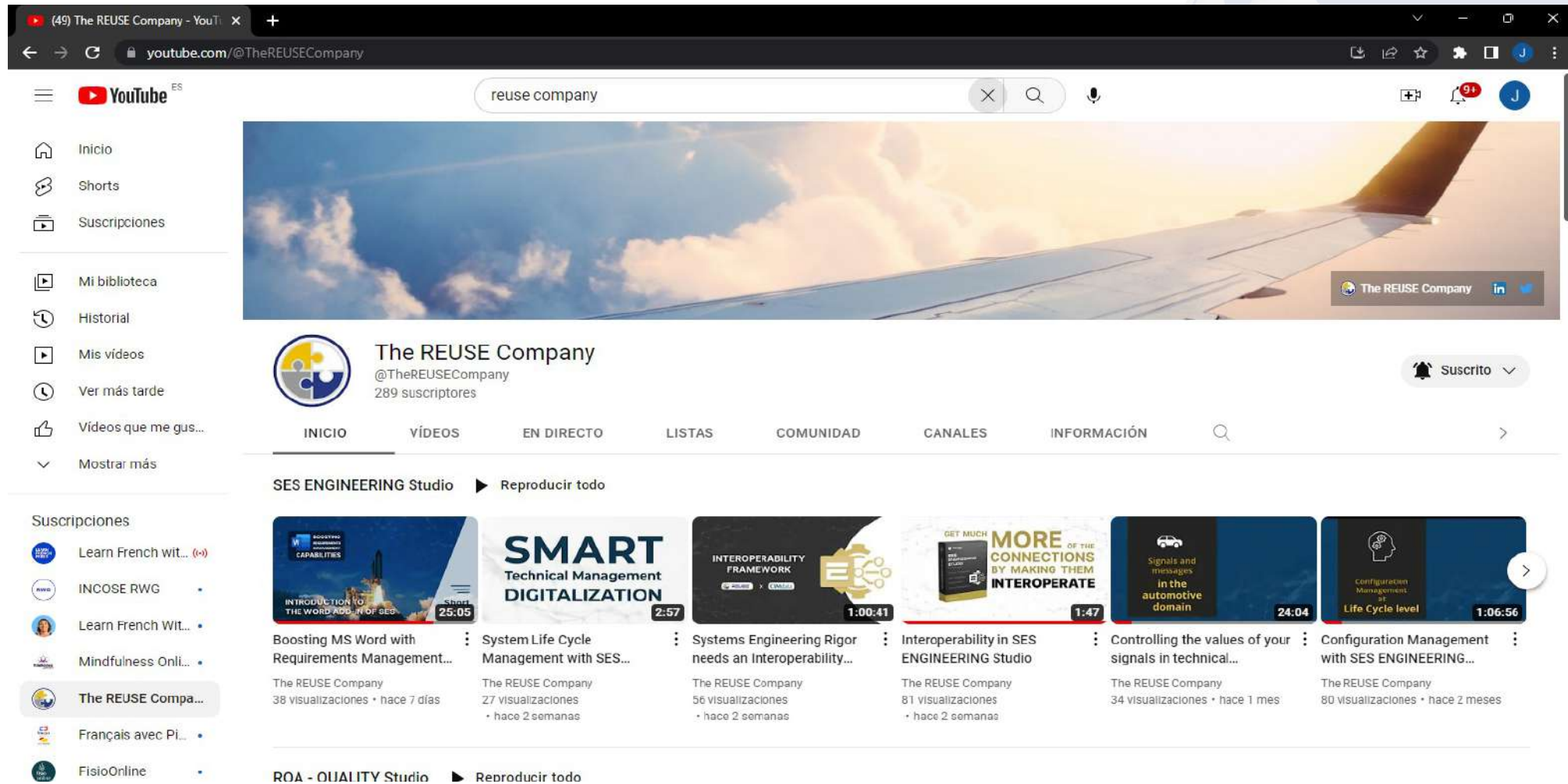


- > www.reusecompany.com
- > Resources -> Webinars (15' and 1hr)
- > Services
- > Support Forum

Enabling SMART Systems Engineering

Products Services Resources TRC Forum Support Company Contact

<p>Requirements management through AIIG Contracts</p>	<p>Connecting the Dots: Interoperability between your favourite Systems Engineering tools</p>	<p>Semantic traceability: how to keep the digital thread all along the SE lifecycle</p>	<p>The MBSE Podcast Trust us we are Systems Engineers MBSE around the world: Spain with Juan Llorens</p>
<p>Passive voice requirements: Why "passive voice" actually can become a nightmare</p>	<p>(In Spanish) Invitados al podcast 'Sistemistas': V&V ¿Qué es qué?</p>	<p>Connecting textual requirements and Capella models (Invited presenters)</p>	<p>Requirements Management: Managing data over entire life cycles</p>
<p>How to kick off your KM – KNOWLEDGE Management project</p>	<p>Taming the System Engineering Life cycle using Connectivity and Interoperability: the SES ENGINEERING Studio</p>	<p>Raise the ante: high-quality models is the only way forward after high-quality requirements</p>	<p>Digitalizing the V&V process on both sides of the V-Model</p>



The screenshot shows the YouTube channel page for 'The REUSE Company'. The channel name is 'The REUSE Company' with the handle '@TheREUSECompany' and 289 subscribers. The page features a navigation menu on the left with options like 'Inicio', 'Shorts', 'Suscripciones', 'Mi biblioteca', 'Historial', 'Mis videos', 'Ver más tarde', 'Videos que me gustaron', and 'Mostrar más'. Below the channel header, there are tabs for 'INICIO', 'VÍDEOS', 'EN DIRECTO', 'LISTAS', 'COMUNIDAD', 'CANALES', and 'INFORMACIÓN'. The main content area displays a grid of video thumbnails from 'SES ENGINEERING Studio' and 'ROA - QUALITY Studio'. The videos include titles like 'Boosting MS Word with Requirements Management...', 'System Life Cycle Management with SES...', 'Systems Engineering Rigor needs an Interoperability...', 'Interoperability in SES ENGINEERING Studio', 'Controlling the values of your signals in technical...', and 'Configuration Management with SES ENGINEERING...'. Each video thumbnail shows a duration and a view count.

The REUSE Company on YouTube:
<https://www.youtube.com/user/TheREUSECompany>

Thank you for your attention!



Ilyes Yousfi



ilyes.yousfi@reusecompany.com



+34 627 08 66 01



@ReuseCompany



<https://www.linkedin.com/in/ilyesyousfi/en>





THE
REUSE
COMPANY

